

KF12

*Portable powered floor monitor
and PA system*

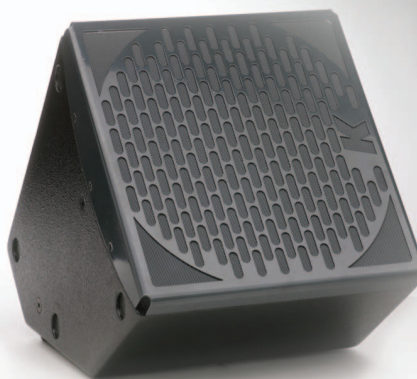
Features:

- Unique performance-to-size ratio
- Self powered + Auxiliary powered output
- Integrated DSP and remote control
- Symmetrical horizontal and vertical coverage
- Cabinet angled for floor monitor use
- Integrated 35mm pole adapter
- Integrated flying and stacking hardware
- Top quality components for outstanding performance
- Top quality components for outstanding performance
- For use in single, point source applications, as a floor monitor and in combination with other K-array systems

Redline

array K

DATASHEET



Applications:

- Small and medium scale events
- Theatres, concert halls, conferences, churches



The K-array KF12 is a self-powered, 2-way speaker system. Its ultra-compact enclosure has an incredible reserve of power that delivers 127 dB continuous sound pressure with consistent 700 horizontal and vertical coverage.

The KF12 is best suited as a floor monitor and for medium throw applications in theatres, concert halls, churches and for corporate AV events. The integrated 35mm pole mount and the second amplifier output are specifically designed for use with the K-array KL 18 passive sub. This combination extends the system frequency response down to 30 Hz.

The KF12 uses a 12" neodymium speaker with a 3" voice coil for low-mid frequencies. The mid-high frequency section uses a co-axially mounted 3" voice coil neodymium compression driver.

An internal DSP module provides 16 control presets. Dedicated remote control software allows for control of the speaker from a PC.

All the KF12 components are designed by the K-array R&D department and custom made under the K-array quality control system.

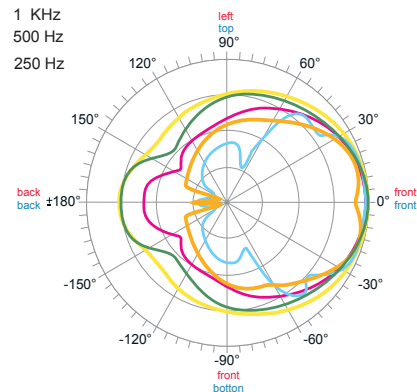
www.k-array.com

HP Sound Equipment s.r.l. Viale Roma 7/i - 50037 - San Piero a Sieve (FI), Italy
tel. +39 055 8487222 - fax. +39 055 8487238 - e-mail: info@k-array.com

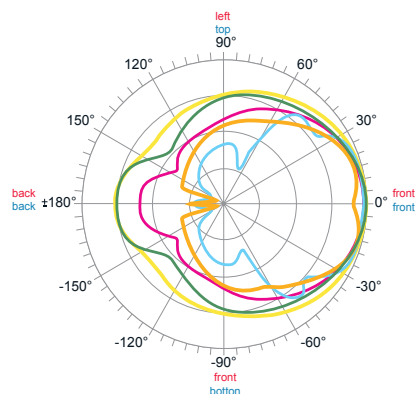
| | |
|----------------------------------|--|
| | KF12 |
| | Acoustics |
| Speakers power handling | 800 w + 200 W ^(AES) |
| Max power | 1200 x 500 W ¹ |
| Impedance | 8Ω + 8Ω |
| Frequency range | 60 Hz - 19 KHz. |
| SPL 1W/ 1mt | 97 dB (low) 101 dB (high) ² |
| Maximum SPL | 127 dB continuous - 133 dB peak |
| | Coverage |
| Horizontal | 70° |
| Vertical | 70° |
| | Crossover |
| Type | DSP controlled |
| Frequency | 1.2 KHz |
| | Transducers |
| Low - Mid frequency | 1 x 12" Neodymium speakers with 3" voice coil |
| High frequency | 1 x 1" Neodymium coaxial compression drivers with 3" voice coil |
| | Audio Input |
| Connectors | male + female parallel 3-pin balanced XLR |
| Wiring | Pin1 = ground / Pin2 = hot (+) / Pin3 = cold (-) |
| | Power Audio Output |
| Connector | 1 x 4-pin speakon |
| | Remote control Input |
| Connectors | 1 x female 8-pin RJ45 |
| | Power Input |
| Connectors | 2 x PowerCon IN/OUT |
| | Amplifiers |
| Type | 1 modules class D - DSP controlled |
| Power | 1000 W x 2 channel (2000 watt total) ³ |
| Protection | Dynamic limiter, over current, over temp, short circuits |
| | AC power |
| Operating range | 210 - 240 Vac 50Hz (default) 100 - 120 Vac 60Hz (selectable) |
| I.nom | 5.5 A / 115 Vac - 3.6 A / 230 Vac |
| Minimum operation voltage | 95 Vac - 195 Vac |
| Maximum operation voltage | 125 Vac - 205 Vac |
| Max continuous and burst current | Default 12A(>10 sec) - 24A (<1 sec) Selectable 20A(>10 sec) - 40A (<1sec) |
| | Physical |
| Dimensions | 32.5 x 33.5 x 33.8 cm (12.91" x 13.19" x 13.31") |
| Weight | 11.8 Kg (26.01 lbs) |

DISPERSION GRAPHS

8 KHz
 4 KHz
 1 KHz
 500 Hz
 250 Hz



horizontal



vertical

Notes for data

1. Maximum RMS applicable power for a musical signal, the reference signal is the one proposed by EIAJ standard.
2. Measured @4 mt then scaled @1 mt
3. Amplifier wattage rating is based on the maximum unclipped burst sine wave RMS voltage that the amplifier will produce into the nominal load impedance.

New materials and design are introduced into existing products without previous notice. Present systems may differ in some respects from those presented in this brochure.